



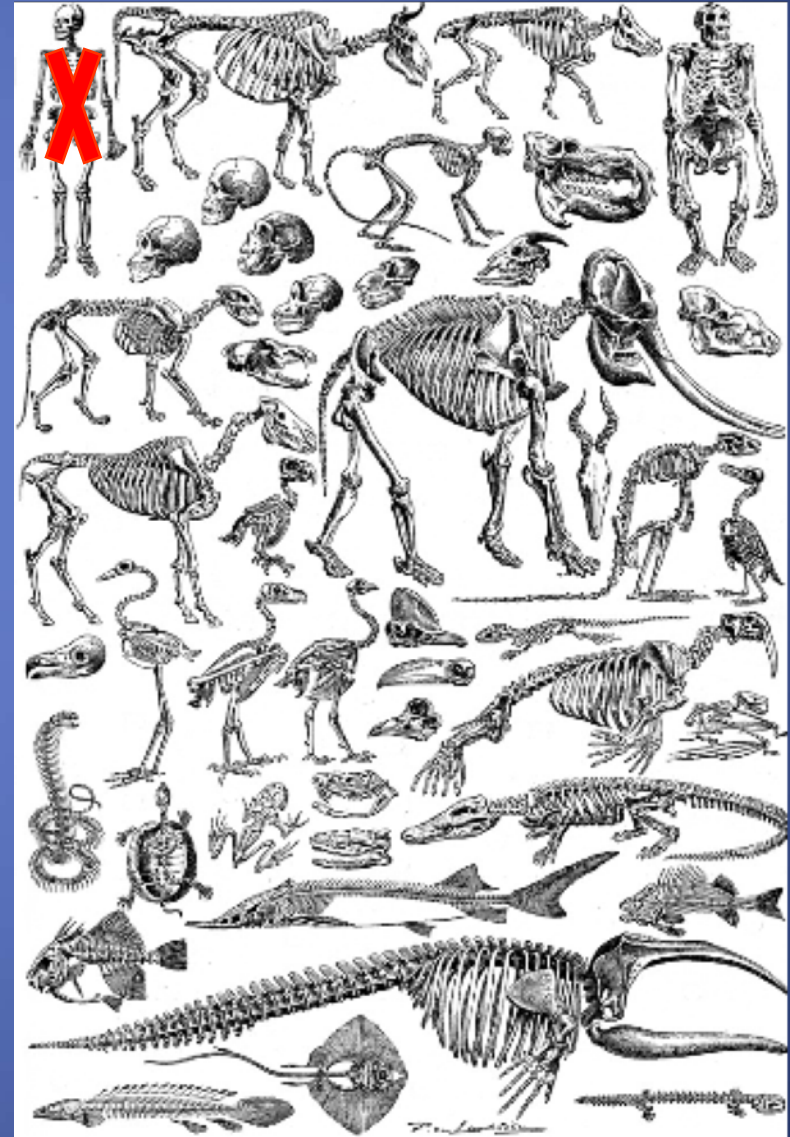
University of
New Haven

Animal Welfare
and the
Institutional Animal Care and
Use Committee (IACUC)

R. Christopher O'Brien, Ph.D.
Forensic Science Department
Center for Wildlife Forensic Research
IACUC Chair

Does this apply to me?

- Invertebrate research?
 - **Nope.** No official oversight required (...yet).
- Human research?
 - **No** – oversight is through **Institutional Review Board**
 - Dr. Alexandria Guzman, Chair
- Non-human vertebrate research?
 - Fish, amphibians, reptiles, birds, mammals?
 - Lab or field studies
 - **Yes!** This applies to you!



Roles of the IACUC

- 1) Review and oversee all use of vertebrates in research and teaching.
- 2) Review all facilities used to house or research vertebrates.
- 3) Ensure safety of all personnel AND animals involved in teaching and research.

A brief history...

- <1963 – no laws or regulations
- 1963 1st edition of the Guide for the Care and Use of Laboratory Animals (The Guide)
- 1966 – Federal Laboratory Animal Welfare Act (AWA) (under USDA)
- 1971 – NIH “Care and Treatment of Laboratory Animals”, first requirements for oversight committees
- 1973 – oversight shifts to **Public Health Service (PHS): Office of Lab Animal Welfare (OLAW)**
- 1985 – AWA amended – now includes lab oversight by committee
- 1986 – *PHS Policy on Humane Care and Use of Laboratory Animals*, revised guidelines include IACUC
- 1991 – USDA enacts revised regulations based on new AWA, requires IACUC

So what now?

- **PHS – OLAW:** All non-human vertebrates, but only projects funded by Federal agencies.
- **USDA:** Almost all animal research facilities regardless of funding, but excludes laboratory rats and mice, birds, and livestock species used in agricultural research.
- Many similarities – UNH applies IACUC oversight to all research on non-human vertebrates.
- IACUC oversight is now standard in the US. Required in most grant proposals (all Federal), most journal submissions.

IACUC guiding principles

- All who care for, use, or produce animals for research, testing, or teaching must assume responsibility for their well-being.
- We must uphold the scientific rigor and integrity of biological research with animals as expected by our colleagues and society at large.
- Implementation... The Three R's
 - Replacement
 - Refinement
 - Reduction

The UNH Committee

- **Institutional Official (non-voting)**
 - Provost Daniel May
- **Veterinarian (1 required)**
 - Dr. Jennifer Flower, Mystic Aquarium
- **Research Scientist Faculty (2 required)**
 - Dr. Tiffany Hesser (Chemistry)
 - Dr. Carter Takacs, Secretary (Biology)
 - Dr. R. Christopher O'Brien, IACUC Chair (Forensics)
- **Non-scientific Research Faculty (1 required)**
 - Dr. Meg Savilonis (English)
- **Member of the community (1 required)**
 - Dr. Jill Carlton (Yale University, retired)

Animal Care & Use Protocol

- Forms and documents – email me: iacuc@newhaven.edu
- PI's must be UNH faculty.
- Use must have legitimate research or educational value, and have no suitable non-animal alternatives.
- Use, handling and housing must conform to professional society standards for that taxa.
- Application must be approved prior to start of research.
- Applies for up to three years (annual report and review).

IACUC protocol process

- Fill out protocol application (PI & student)
- PI submits application to IACUC@newhaven.edu
- PI and anyone involved in live animal use complete CITI training modules and submit records to IACUC Chair
- IACUC Chair sends application to committee, requests either:

Full committee review:

- Protocol reviewed at next Biannual IACUC meeting
 - Deny
 - Revise and resubmit
 - Accept (1-3 yrs)

Designated member review:

- Chair designates 2-3 reviewers
- Reviewers respond
 - Deny
 - Revise and resubmit
 - Accept (1-3 yrs)



- IACUC Chair alerts PI
- PI and students complete CITI training modules
- **Work with animal may begin at this point**
- Annual report to Chair
- Biannual inspection of animal facilities

Other IACUC roles

- **Facilities review:** biannual inspection of all facilities. Deficiencies must be addressed or protocol will be revoked and research stopped.
- **Safety:** Training provided, overseen, and documented by PI.
- **CITI training modules:**
 - “Working with the IACUC”
 - Taxa specific modules
- **Questions, etc.:** IACUC@newhaven.edu